



# THE RED CENTRE

2025-2026 EXPERIENCES



**FULLY GUIDED** Experienced & dedicated Driver Guides

**UNDISPUTED EXPERTS** Over 100 years' knowledge & passion

**LUXURY VEHICLES** Air-conditioned, restrooms, free USB charging

**UNIQUE EXPERIENCES** The must-see sights & sounds of Central Australia



# Amazing Red Centre Experiences

For a century, guests have entrusted us to help them discover more in this wild and wonderful area. And over the years, we've met a few characters along the way. These enduring friendships between our amazing people and the locals we visit help us craft expert and authentic travel experiences. Travel the Northern Territory with those who know it best.

**Join us on a fully immersive, multi-sensory, off-the-beaten-track adventure!**

## Our People

People are so important on every tour, and you'll be guided by our best. Our experienced, accredited local Driver Guides go above and beyond at every step with the full support of a 24/7 team behind the scenes - ensuring your adventure is seamless. Our dedicated individuals truly love what they do: providing comprehensive commentary, sharing beautiful locations and ensuring you spot the hidden gems you might unknowingly walk right past. Our people are our heroes, and we know they'll become yours too.



## The Only Way to Arrive, On a Luxury Coach

Travel in pure comfort on our state-of-the-art coaches. Air-conditioned and equipped with USB chargers on our larger vehicles, you'll never miss capturing those countless photo opportunities - and believe us, you'll need that battery life, as there's so much to see here. Relax in reclining seats (many people comfortably nap on their journey home!). You'll be in good hands with our modern coaches, which feature GPS, W/C, DVD players, PA systems and onboard Wi-Fi (where available) - everything you need for a comfortable journey.





Y19 From **\$345** adult | **\$245** child**DEPARTS**

Ayers Rock Resort 4.00am (Oct-Mar), 4.30am (Apr-Sep)

**RETURNS**Ayers Rock Resort 5.00pm (Oct-Mar), 5.30pm (Apr-Sep)  
(times approximate)**FITNESS**Rim Walk – Dynamic  
Creek Bed Walk – Leisurely**INCLUSIONS**

Cooked Breakfast

**PASSES**Prices do not include NT Parks Pass  
(see back page for details)

Kings Canyon Rim Walk

# Kings Canyon & Outback Panoramas



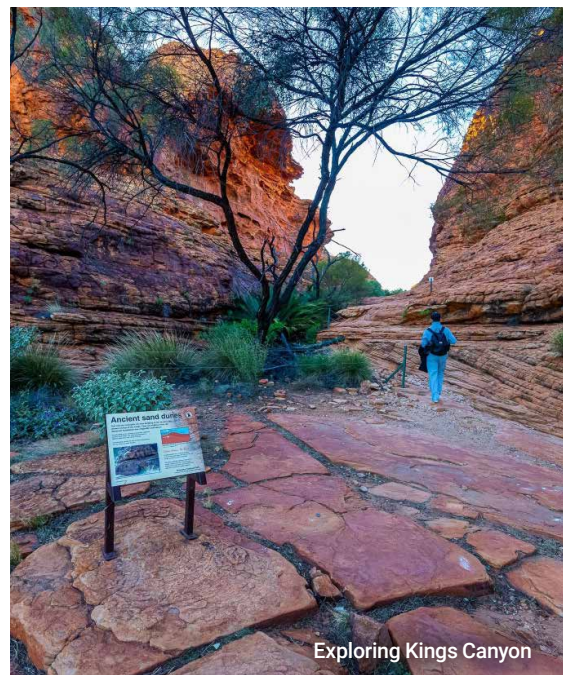
Travel from Ayers Rock Resort to Kings Canyon, stopping for a cooked breakfast at Kings Creek Station. Climb to the canyon rim for breathtaking views of Watarrka National Park. Hike along the rim, stopping at key points to look down into the canyon. Along with your Guide you will descend into the lush green oasis of the 'Garden of Eden' before climbing back up to continue along the rim. After your hike, enjoy lunch (own expense) at Kings Canyon Resort. Afterwards, board your coach to return to Ayers Rock Resort via Lasseter Highway, keeping an eye out for the spectacular Mount Conner along the way as you travel across Curtin Springs Station.

## HIGHLIGHTS

- Start the Day with a Cooked Breakfast
- Hike to the Rim of Awe-Inspiring Kings Canyon
- Take in the Views of Watarrka National Park
- Descend into the 'Garden of Eden'
- Or Explore the Boulder Strewn Canyon Floor
- Learn about Unique Geology and Plant Life

## WHAT TO BRING

- Sturdy enclosed walking shoes
- Sunglasses, sunscreen and hat
- Water bottles
- Warm layers in cooler months
- Flynet in summer months (optional)
- Swimmers & towel (if swimming)



Exploring Kings Canyon



Y17 From \$199 adult | \$139 child

Y17B^ From \$408 adult | \$288 child

**DEPARTS**

Ayers Rock Resort 2.30pm (Apr-Oct), 3.00pm (Nov-Mar)

**RETURNS**

Y17: Ayers Rock Resort 30 minutes after sunset

Y17B: Ayers Rock Resort 2.5 hours after sunset  
(times approximate)**FITNESS**

Leisurely

**PASSES**Prices do not include National Park Pass  
(see back page for details)

Tranquil Mutitjulu Waterhole

## Uluru Sacred Sites & Sunset



Visit the Uluru-Kata Tjuta Cultural Centre, where you'll have time to explore the galleries, and where you may be lucky enough to see local Aboriginal Artists at work. Travel to the base of Uluru, where your Guide shares the Aboriginal Tjukurpa (creation) stories that breathe life into this giant formation. Feel the spirit of the land as your Driver Guide takes you on a walk to the Mutitjulu Waterhole, interpreting the meaning of the ancient Rock Art and sacred sites you'll see along the way. Finally, travel to the Uluru sunset viewing area, relax with sparkling wine, and enjoy the famous Uluru sunset, witnessing the changing colours as the sun sets below the horizon.

Please note: Language devices are available in German, Italian, Spanish, French, and Mandarin on this tour.

### ^OPTIONAL ADD-ON

### HIGHLIGHTS

- Explore Uluru-Kata Tjuta Cultural Centre
- See What's to Discover at the Base of Uluru
- Hear Anangu Tjukurpa (Stories)
- Visit Tranquil Mutitjulu Waterhole
- View Ancient Aboriginal Rock Art
- Witness Colour Changes of Uluru at Sunset
- Enjoy Sparkling Wine and Light Snacks

### WHAT TO BRING

- Enclosed walking shoes
- Sunglasses, sunscreen and hat
- Water bottle to hold 1 litre
- Warm layers in cooler months
- Flynet in summer months (optional)
- Cash if purchasing Aboriginal artwork

#### Tour + BBQ Dinner Under the Stars (Y17B)

After sunset continue to our exclusive venue for a BBQ dinner, with Uluru as your backdrop. You'll wonder at the scale of Uluru at night on the only evening experience inside Uluru-Kata Tjuta National Park. Relax in the company of friends and fellow travellers and enjoy sparkling wine and other beverages. Dine on favourites from the grill and a selection of freshly prepared salads, followed by a tasty dessert. There's even time for star gazing. Your Guide will conduct a tour of the night sky, pointing out some of the visible constellations.



Y14 From **\$199** adult | **\$139** child

#### DEPARTS

Ayers Rock Resort 90 minutes prior to sunrise

#### RETURNS

Ayers Rock Resort approximately 4 hours after sunrise

#### FITNESS

Balanced

#### PASSES

Prices do not include National Park Pass  
(see back page for details)

Kata Tjuta Dune Viewing Platform

## Uluru Sunrise & Kata Tjuta



As dawn breaks, witness the mesmerizing sunrise over Uluru, where the vibrant colours of the desert sky create a stunning backdrop to the ancient rock formation. Enjoy a warm cup of tea or coffee as you soak in the serene beauty of this sacred landscape. Continue your journey to Walpa Gorge at Kata Tjuta. Your Guide provides fascinating insights into the geological and cultural significance of this remarkable site. Follow the path through the gorge, marvelling at the towering red rock walls and unique flora and fauna. On your way back to the resort, stop at the dune viewing platform for panoramic views of the southern side of Kata Tjuta.

Please note: Language devices are available in German, Italian, Spanish, French, and Mandarin on this tour.

### HIGHLIGHTS

- Witness a World-Famous Sunrise at Uluru
- Tea, Coffee and Biscuits at Sunrise
- Gain Cultural & Historical Insights
- Marvel at the remarkable Domes of Kata Tjuta
- Walk through Walpa Gorge
- Discover Unique Desert Flora & Fauna
- View Kata Tjuta from the Dune Viewing Platform

### WHAT TO BRING

- Sturdy enclosed walking shoes
- Sunglasses, sunscreen and hat
- Water bottle to hold 1 litre
- Warm layers in cooler months
- Flynet in summer months (optional)



Walpa Gorge

FOL From **\$129** adult | **\$95** child

#### DEPARTS

Ayers Rock Resort 105 minutes prior to sunrise

#### RETURNS

Ayers Rock Resort approximately 30 minutes after sunrise

#### FITNESS

Leisurely

#### PASSES

National Park Pass is not required

Field of Light

## Uluru Sunrise & Field of Light



This morning you'll be driven the short distance to the exclusive Field of Light location. With just enough time for some background commentary on the internationally renowned artist Bruce Munro, you will arrive to see his artistic endeavour. Arriving in complete darkness, this once-in-a-lifetime experience will be etched in your mind forever. Walk through the field of 50,000 spheres of light at your own pace and then make your way to the top of a large sand dune to the Field of Light sunrise viewing area. The Field of Light site is dark, so to ensure you have the most unique experience, we recommend you use your phone light or bring a small torch to help navigate your way on the pathway provided. At the viewing area the AAT Kings team will serve you tea, coffee or hot chocolate as the sun starts to rise and lights up the surrounding desert. From the viewing area you can see both Uluru and Kata Tjuta as the desert comes to life.

### HIGHLIGHTS

- Walk through 50,000 Spheres of Light
- Experience the serene pre-dawn ambiance
- Capture Photographs of this Unique Event
- Enjoy a Warm Beverage from the Private Dune
- Learn about its Creation from your Guide
- Spot Uluru & Kata Tjuta as the Sun Rises

### WHAT TO BRING

- Enclosed walking shoes
- Small torch or phone light
- Warm layers in cooler months
- Flynet in summer months (optional)



From the Private Dune



Y53 From **\$329** adult | **\$235** child**DEPARTS**

90 minutes prior to sunrise from Ayers Rock Resort

**RETURNS**

5hr 30 mins. approximately after sunrise to Ayers Rock Resort

**FITNESS**

Balanced

**PASSES**Prices do not include National Park Pass  
(see back page for details)

Uluru Sunrise

## Uluru Sunrise & Cultural Experience



Witness an inspiring Red Centre sunrise. Enjoy a warming cup of tea or coffee as the dawn creeps across the desert plain and lights up Uluru. Afterwards, meet your Aboriginal Guide from the local Mutitjulu community, and an interpreter. Get up close to Uluru, where they will share the Tjukurpa stories (the foundation of Anangu culture) of the areas as you walk through them. Now you understand the spiritual and cultural connection to Uluru, you will also learn more about their culture including weaving, art, and other artefacts. To deepen your understanding of the local culture, your tour includes time to explore the Uluru Kata Tjuta Cultural Centre, where you'll gain further insight into the traditions, customs, and stories of the Anangu, the traditional owners of the land.

### HIGHLIGHTS

- Witness a Magical Sunrise at Uluru
- Tea, coffee and biscuits at Sunrise
- Join a Cultural Experience with an Anangu Guide
- Hear Tjukurpa (Stories) via an Interpreter
- Explore the Uluru-Kata Tjuta Cultural Centre
- Learn about Anangu traditions and customs

### WHAT TO BRING

- Sturdy enclosed walking shoes
- Sunglasses, sunscreen and hat
- Water bottle to hold 2 litres
- Warm layers in cooler months
- Flynet in summer months (optional)



Tea, coffee and biscuits at Uluru Sunrise



Y40 From **\$199** adult | **\$139** child**DEPARTS**

Ayers Rock Resort 60 minutes prior to sunrise

**RETURNS**

Ayers Rock Resort 4.5 - 5.5 hours after sunrise

**INCLUSIONS**

Light breakfast

**FITNESS**

Dynamic

**PASSES**Prices do not include National Park Pass  
(see back page for details)

Uluru Guided Base Walk

# Uluru Morning Guided Base Walk



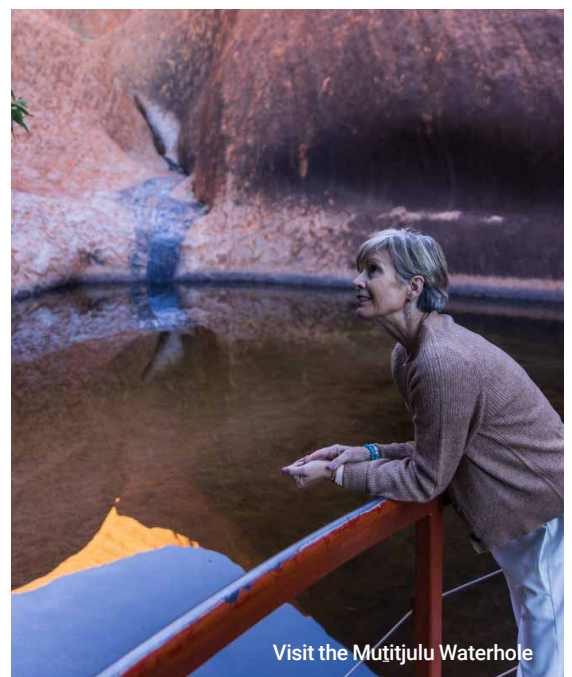
Join your Guide on a 10.5 kms hike around the entire base of Uluru. Along the way, enjoy a light breakfast as you begin to absorb the enormity and beauty of your surroundings. Beginning at Kuniya Piti, a sacred site, hear the Tjukurpa story (beliefs and law of Anangu, the local Aboriginal people) of the Mala Men. Continue around Uluru to the Mala Walk, one of the most important habitation areas for the local Aboriginal people over thousands of years. It includes a visit into Kantju Gorge, where after rainfall, water can cascade over the side of Uluru and plunge some 90 metres. After a short break continue to the Lungkata Walk where your Guide will tell you the Tjukurpa story of the cheeky Blue Tongue Lizard! Next stop is the Mutitjulu Waterhole, once an important water source for the Anangu. Your Guide will indicate the natural features of the landscape, as well as Aboriginal rock art. Finally return to Kuniya Piti and board your coach for the short drive to Ayers Rock Resort.

## HIGHLIGHTS

- Small Group Experience
- Walk around the Base of Uluru
- Begin at Kuniya Piti Sacred Site
- Take the Mala Walk & Visit Kantju Gorge
- Continue to the Lungkata Walk
- Visit the Serene Mutitjulu Waterhole
- Hear Anangu Tjukurpa (Stories)
- View Ancient Aboriginal Rock Art

## WHAT TO BRING

- Sturdy enclosed walking shoes
- Sunglasses, sunscreen and hat
- Water bottle to hold 2 litres
- Warm layers in cooler months
- Flynet in summer months (optional)



Visit the Mutitjulu Waterhole



Y11 From **\$105** adult | **\$75** childY11B^ From **\$314** adult | **\$224** child**DEPARTS**

Ayers Rock Resort 60 minutes prior to sunset

**RETURNS**

Y11: Ayers Rock Resort 30 minutes after sunset

Y11B: Ayers Rock Resort 2.5 hours after sunset  
(times approximate)**FITNESS**

Leisurely

**PASSES**Prices do not include National Park Pass  
(see back page for details)

Uluru Sunset

# Uluru Sunset



Enjoy on an unforgettable journey to the Uluru sunset viewing area, where you'll witness one of nature's most spectacular displays. Begin with a comfortable drive through stunning desert landscapes, building anticipation for the evening's highlight. Upon arrival, take a leisurely stroll to find your perfect spot to watch the sunset, whether it's secluded or a panoramic vantage point. As the sun descends towards the western horizon, enjoy a glass of sparkling wine, adding elegance to the experience. Watch in awe as the sun's rays illuminate Uluru, transforming it into a canvas of vibrant colours. Capture the moment with your camera or simply take mental snapshots of the breathtaking views. As the sky transitions to twilight and you return to the resort, reflect on the experience of the desert and the grandeur of Uluru.

## HIGHLIGHTS

- Witness a Spiritual Sunset at Uluru
- Savour Sparkling Wine and Light Snacks
- Enjoy unrestricted Views of the Sunset
- Experience the Tranquillity of the Outback
- Discover the Colour Changes of Uluru

## WHAT TO BRING

- Enclosed walking shoes
- Water bottle to hold 1 litre
- Warm layers in cooler months
- Flynet in summer months (optional)
- Cash if purchasing Aboriginal artwork

## ^OPTIONAL ADD-ON

### Tour + BBQ Dinner Under the Stars (Y11B)

After sunset continue to our exclusive venue for a BBQ dinner, with Uluru as your backdrop. You'll wonder at the scale of Uluru at night on the only evening experience inside Uluru-Kata Tjuta National Park. Relax in the company of friends and fellow travellers and enjoy sparkling wine and other beverages. Dine on favourites from the grill and a selection of freshly prepared salads, followed by a tasty dessert. There's even time for star gazing. Your Guide will conduct a tour of the night sky, pointing out some of the visible constellations.



Y52 From \$195 adult | \$139 child

**DEPARTS**

12.30pm from Ayers Rock Resort

**RETURNS**

5.00pm approximately to Ayers Rock Resort

**FITNESS**

Dynamic

**PASSES**Prices do not include National Park Pass  
(see back page for details)

Kata Tjuta

# Kata Tjuta & Valley of the Winds



Embark on a journey to the captivating landscapes of Kata Tjuta. With your Driver Guide, immerse yourself in geological wonders, cultural insights, and historical anecdotes. As you approach the awe-inspiring rock formations, hear stories spanning centuries. Witness the grandeur of these towering domes, remnants of a geological saga over half a billion years ago. Your adventure includes a 5.4-kilometre hike to the enchanting Valley of the Winds, nestled in the heart of Kata Tjuta's domes. Guided by creek bed rhythms, walk into a timeless realm where nature's majesty reigns supreme. On your way back to the resort, stop to enjoy panoramic views of Kata Tjuta from the dune viewing platform.

## HIGHLIGHTS

- Small Group Experience
- Marvel at the Remarkable Domes of Kata Tjuta
- Gain Cultural & Historical Insights
- Experience the Breathtaking Valley of the Winds
- View Kata Tjuta from the Dune Viewing Platform

## WHAT TO BRING

- Sturdy enclosed sturdy walking shoes
- Sunglasses, sunscreen and hat
- Water bottle to hold 2 litres
- Warm layers in cooler months
- Flynet in summer months (optional)



Small Group Experience



Y8 From **\$169** adult | **\$119** child

#### DEPARTS

Ayers Rock Resort 90 minutes prior to sunset

#### RETURNS

Ayers Rock Resort approximately 60 minutes after sunset

#### FITNESS

Leisurely

#### PASSES

Prices do not include National Park Pass  
(see back page for details)

Kata Tjuta Sunset

## Kata Tjuta Sunset



Enjoy a leisurely drive to Kata Tjuta, one of Central Australia's most breathtaking destinations, for an unforgettable sunset experience. As you journey through stunning desert landscapes, your knowledgeable Driver Guide will provide fascinating insights into the geological and cultural history of the area. Learn about the ancient rock formations, the significance of Kata Tjuta to the Anangu, and the unique flora and fauna that thrive in this harsh yet beautiful environment. Upon arrival, marvel at the majestic domes of Kata Tjuta, which have stood the test of time for millions of years. These towering rock formations offer a spectacular view that will leave you in awe. As the sun begins to set, find a comfortable spot to relax and soak in the serene atmosphere. With a glass of sparkling wine in hand, witness the sky transform into a canvas of vibrant colours, highlighting the natural beauty of the Outback.

### HIGHLIGHTS

- Experience a Stunning Sunset at Kata Tjuta
- Enjoy Sparkling Wine and Light Snacks
- Gain Cultural & Historical Insights
- Discover Unique Desert Flora & Fauna

### WHAT TO BRING

- Enclosed walking shoes
- Water bottle to hold 1 litre
- Warm layers in cooler months
- Flynet in summer months (optional)



Enjoy sparkling wine at sunset



# Uluru Sightseeing Passes

Now you've seen everything, why not buy a bundle of tours – and save on the cost of individual tours!

Your pass is valid for 3 consecutive days from the start of your first tour and includes the Uluru-Kata Tjuta National Park Pass. This brochure contains each of the tours in these Sightseeing Passes.

*Wiru Pass*

2 Day Pass

Y2 From **\$349** adult **\$219** child

**Wiru Pass**  
2 Day Pass Includes:

Uluru Sacred Sites & Sunset (Y17) +  
Uluru Sunrise & Field of Light (FOL)

Add on Uluru BBQ (Code: BBQA)

*Piti Pass*

2 Day Pass

Y3 From **\$429** adult **\$265** child

**Piti Pass**  
2 Day Pass Includes:

Uluru Sacred Sites & Sunset (Y17) +  
Uluru Sunrise & Kata Tjuta (Y14)

Add on Uluru BBQ (Code: BBQA)  
Add on Kings Canyon (Code: Y19)

*Manta Pass*

3 Day Pass

Y4 From **\$515** adult **\$335** child

**Manta Pass**  
3 Day Pass Includes:


Uluru Sacred Sites & Sunset (Y17) +  
Kata Tjuta Sunset (Y8) +  
Uluru Sunrise & Field of Light (FOL)

Add on Uluru BBQ (Code: BBQA)

## Red Centre Connections

Travel between Ayers Rock Resort, Alice Springs or Kings Canyon on one of our coach transfers with informative commentary from your Driver Guide along the way.

**Alice Springs to Ayers Rock Resort** **A6**




**DEPARTS**  
From 6.15am

**ARRIVES**  
1.00pm approximately

From **\$249** adult  
**\$175** child

Departing Alice Springs, take in the rugged desert landscapes, as you pass through the MacDonnell Ranges. Your Driver Guide will provide informative commentary about the natural and geological history of the region, as well as the unique Australian desert flora and fauna. Call in at a roadhouse for a quick break and see Atila (Mt. Conner) before arriving at Ayers Rock Resort.

**Ayers Rock Resort to Alice Springs** **Y6**



**DEPARTS**  
12.30pm (Oct-Mar)  
1.00pm (Apr-Sep)

**ARRIVES**  
6.30pm (Oct-Mar)  
7.00pm (Apr-Sep)  
(times approximate)

From **\$249** adult  
**\$175** child

Travel through spectacular desert scenery from Ayers Rock Resort. Pass through Curtin Springs Station and see Atila (Mt. Conner). Call in at Erdunda, a roadhouse located at the junction of the Stuart and Lasseter Highways, where you can purchase afternoon tea. Continue along the Stuart Highway before arriving in Alice Springs.

**Ayers Rock Resort to Kings Canyon** **Y23**




**DEPARTS**  
4.00am (Oct-Mar)  
4.30am (Apr-Sep)

**ARRIVES**  
9.00am (Oct-Mar)  
9.30am (Apr-Sep)  
(times approximate)

From **\$195** adult  
**\$139** child

Departing Ayers Rock Resort, pass through Curtin Springs Station and see Atila (Mt. Conner) on your way to Kings Canyon. Stop for breakfast at Kings Creek Station. Along the way your Driver Guide will provide informative commentary about the history of the surrounding region. Keep a look out for wild horses and camels.

**Kings Canyon to Ayers Rock Resort** **Y22**



**DEPARTS**  
1.00pm (Oct-Mar)  
1.30pm (Apr-Sep)

**ARRIVES**  
5.00pm (Oct-Mar)  
5.30pm (Apr-Sep)  
(times approximate)

From **\$195** adult  
**\$139** child

Travel from Kings Canyon Resort to Ayers Rock Resort. Admire desert scenery while enjoying the outback journey with your professional Driver Guide. View Atila (Mt. Conner), often mistaken for Uluru. Then pass through Curtin Springs, a working cattle station operated by the same family since 1956. Look out for wild camels that inhabit the area.

Visit [aatkings.com/A6](http://aatkings.com/A6) or Y6 or Y23 or Y22 for days of departure.



Y73 From **\$265** adult | **\$185** child**DEPARTS**

Alice Springs 7.30am (earlier from your hotel)

**RETURNS**

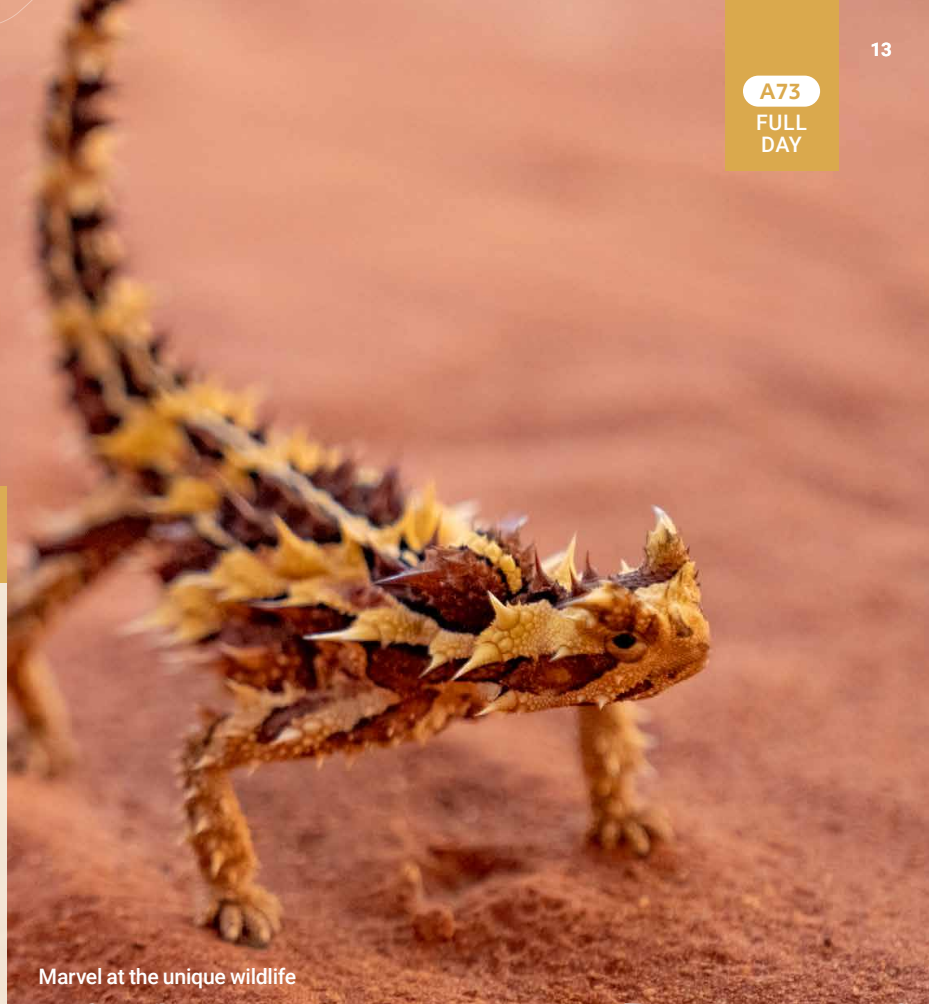
Alice Springs approximately 6.00pm

**INCLUSIONS**

Morning Tea

**FITNESS**

Balanced

**PASSES**Prices do not include National Park Pass  
(see back page for details)

Marvel at the unique wildlife

## Best of Alice



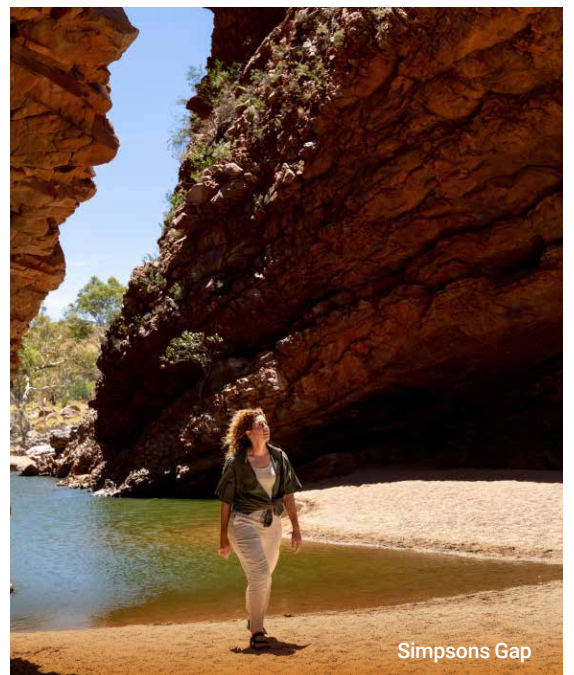
Depart Alice Springs and stop at John Flynn's Grave Historical Reserve, resting place of Reverend Flynn, founder of the Royal Flying Doctor Service. Travel to Simpsons Gap, featuring towering cliffs and a permanent waterhole, significant to the Arrernte people. Visit Standley Chasm, sacred to women's dreaming in Aboriginal culture. Take a 1.2km walk to the dramatic 80-metre-tall rock-face, noting the unique microclimate and ancient Cycads. Enjoy morning tea at a local café before returning to Alice Springs for free time. In the afternoon, tour Alice Springs, including the School of the Air, the historic Telegraph Station, the Royal Flying Doctor Service, and the Alice Springs Reptile Centre. Conclude with panoramic views from Anzac Hill.

### HIGHLIGHTS

- Experience Tjoritja West MacDonnell Ranges
- Visit John Flynn's Grave Historical Reserve
- Observe Unique Wildlife at Simpsons Gap
- Gain Aboriginal Cultural Insights
- Walk through Iconic Standley Chasm
- Enjoy Morning Tea at Standley Chasm
- Hear about the Local Flora & Fauna
- Learn Firsthand at the School of the Air
- Explore the Historic Telegraph Station
- Visit the Legendary Royal Flying Doctor Service
- Discover the Inhabitants at the Reptile Centre

### WHAT TO BRING

- Sturdy enclosed walking shoes
- Sunglasses, sunscreen and hat
- Water bottle to hold 1 litre
- Warm layers in cooler months
- Flynet in summer months (optional)



Simpsons Gap



A5 From **\$259** adult | **\$185** child**DEPARTS**

Alice Springs 7.15am (earlier from your hotel)

**RETURNS**

Alice Springs approximately 6.00pm

**INCLUSIONS**

Morning tea &amp; lunch

**FITNESS**

Dynamic

**PASSES**Prices do not include NT Parks Pass  
(see back page for details)

Spectacular West MacDonnell Ranges

# Palm Valley Outback Safari by 4WD



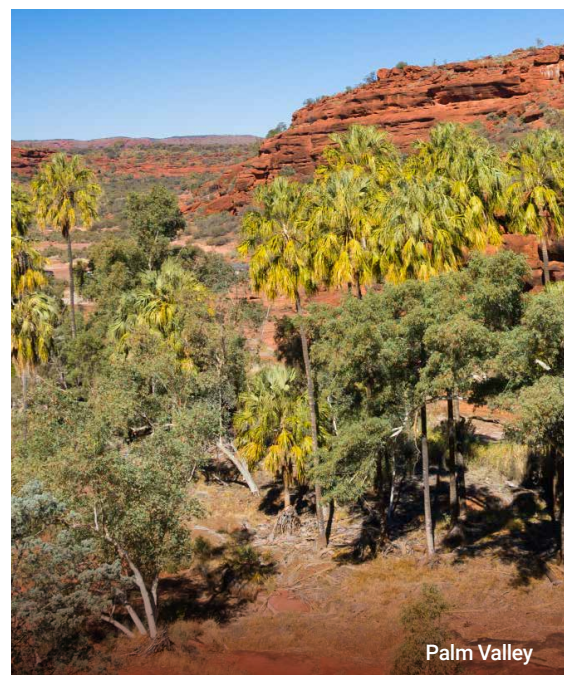
Your 4WD safari travels through the West MacDonnell Ranges to Hermannsburg, an Aboriginal community renowned for its art collection and the home of Albert Namatjira. Enjoy morning tea here before travelling down the bed of the Finke River, one of the world's oldest watercourses, into Palm Valley. See spectacular rock formations, white sands, and an oasis of rock pools and palm trees. Enjoy a picnic lunch in the National Park. Discover unique plants such as the cycad and 'Livistona Mariae' (cabbage palm), known worldwide as relic plants unique to Central Australia. You'll also view the rock formation known as the Amphitheatre.

## HIGHLIGHTS

- Travel 4WD through West MacDonnell Ranges
- Visit Indigenous Community of Hermannsburg
- Enjoy Morning Tea in Hermannsburg
- Travel the edge of 350-Million-Year-Old River
- Find out why Palm Valley is a Hidden Gem
- View Rare & Unique Plants
- See the Spectacular Sandstone Amphitheatre
- Relax with Picnic Lunch in Stunning Scenery

## WHAT TO BRING

- Sturdy enclosed walking shoes
- Sunglasses, sunscreen and hat
- Water bottle to hold 1 litre
- Warm layers in cooler months
- Flynet in summer months (optional)



Palm Valley



A3 From **\$179** adult | **\$129** child

A3D^ From **\$264** adult | **\$174** child

#### DEPARTS

Alice Springs 1.45pm (earlier from your hotel)

#### RETURNS

Alice Springs approximately 6.00pm

#### FITNESS

Leisurely



Royal Flying Doctor Service

A3  
HALF  
DAY

## A Town like Alice



Tour 'The Alice' and visit the School of the Air, providing education to children in remote areas. You might observe lessons if it's the school term. Stop at the historic Alice Springs Telegraph Station, an iconic part of the overland telegraph. Visit the Royal Flying Doctor Service and the Alice Springs Reptile Centre. Conclude with a panoramic view of Alice Springs and surrounds from Anzac Hill.

### HIGHLIGHTS

- Learn Firsthand at the School of the Air
- Explore the Historic Telegraph Station
- Visit Legendary Royal Flying Doctor Service
- Discover the Inhabitants at the Reptile Centre
- Enjoy Panoramic Views from Anzac Hill

### ^OPTIONAL ADD-ON

#### Tour + Alice Springs Desert Park (A3D)

Before your tour of the town, why not immerse yourself in the beauty of the Central Australian desert at the Alice Springs Desert Park? It's home to a vast range of plants and wildlife native to the area. You can really experience the beauty and diversity of this incredible landscape. The Arrernte people, traditional owners of the park, are also on hand to share their local wisdom and knowledge.

A7 From **\$129** adult | **\$95** child

#### DEPARTS

Alice Springs 7.30am (earlier from your hotel)

#### RETURNS

Alice Springs approximately 12 noon

#### INCLUSIONS

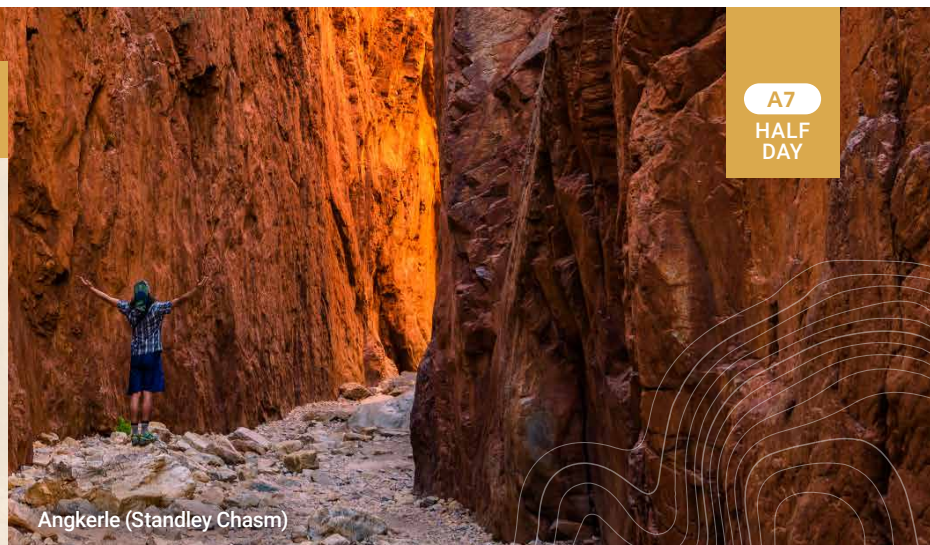
Morning tea

#### FITNESS

Balanced

#### PASSES

Prices do not include NT Parks Pass



Angkerle (Standley Chasm)

A7  
HALF  
DAY

## West MacDonnell Ranges



Depart Alice Springs and stop at John Flynn's Grave Historical Reserve, the resting place of Reverend Flynn, founder of the Royal Flying Doctor Service. Travel to Simpsons Gap, featuring towering cliffs and a permanent waterhole, significant to the Arrernte people as the home of giant goanna ancestors. Visit Standley Chasm, traditionally known as Angkerle Atwatye, sacred to women's dreaming in Aboriginal culture. Take a 1.2km walk to the dramatic 80-metre-tall rock face, noting the unique microclimate and ancient Cycads. Enjoy morning tea at a local café before returning to Alice Springs.

### HIGHLIGHTS

- Experience Tjoritja West MacDonnell Ranges
- Visit John Flynn's Grave Historical Reserve
- Observe Unique Wildlife at Simpsons Gap
- Gain Aboriginal Cultural Insights
- Walk through Iconic Angkerle (Standley Chasm)
- Enjoy Morning Tea at Standley Chasm
- Learn about the Unique Desert Flora & Fauna



AAT Kings is proud to pay respect to the continuation of cultural practices of First Nations and Torres Strait Islander peoples.



**Simpsons Gap & Angkerle Atwatye (Standley Chasm)**

Discover flora and fauna on a walk through these sheer rock faces in the West MacDonnell Ranges.

**Alice Springs**

The central hub of the Australian outback. Visit Alice Springs Reptile Centre, Telegraph Station, and the headquarters of the Royal Flying Doctor Service.

**Kings Canyon**

Walk along the towering red rock cliffs and take in views of the forest of palms below.

**Palm Valley**

Through the Central Australian landscape, we'll take you down the very edge of the Finke River and into the amazing Palm Valley.

**Kata Tjuta**

Meaning 'many heads', watch these soaring domes glow and change colour at sunrise and sunset.

**Uluru**

The Anangu welcome you to Uluru-Kata Tjuta National Park, a living cultural landscape where earth and memories exist as one.

**How to Book**

**Telephone**

1300 228 546

**Email**

daytoursres@aatkings.com.au

**Online**

aatkings.com

**Booking Conditions**

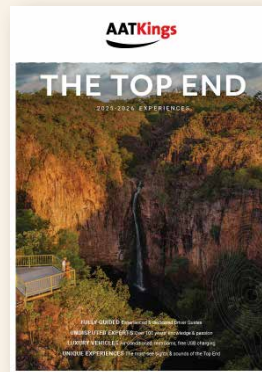
aatkings.com/about-us/  
booking-conditions/



**Pick-up Locations**



**Digital Brochures**



**Is your next stop the Top End?**

To book your Kakadu, Litchfield and Nitmiluk National Parks, Tiwi Islands and Darwin tours visit [aatkings.com](http://aatkings.com)

**Particular Needs** If you have any particular needs/mobility concerns, please contact us on 1300 228 546.

**For the latest pricing, days of departure and itinerary details, visit [aatkings.com](http://aatkings.com)**

**AAT Kings Tours Pty Ltd**  
82-86 Bourke Road, Alexandria NSW 2015  
ABN 97 079 722 464



**Uluru-Kata Tjuta National Park Pass:** The cost of the Pass must be added to the prices in this brochure, where indicated. The cost is \$38 per adult. Children 17 years and under are free of charge. It is valid for 3 consecutive days. When taking multiple Day Tours over 3 consecutive days in the National Park you only need to pay the cost once.

**NT Parks Pass (separate from Uluru-Kata Tjuta National Park Pass):** The cost of the Pass must be added to the prices in this brochure, where indicated. The cost is \$10 per adult/\$5 per child for each park for each day. These are additional compulsory government charges and are subject to change without notice. You must carry your Pass with you every time you enter the National Parks or you will be required to purchase another. For details on the NT National Park Passes visit: [aatkings.com/park-passes](http://aatkings.com/park-passes)

Photography: A selection of photography in this brochure has been supplied by Tourism NT, Whitworth Images, Sean Scott, Shaana McNaught, Helen Orr, Ray Reyes, Joshua Griffen, Richard l'Anson, Yuri Kardashyan, Iltija Ntjarra (Many Hands), Posnov, Harrison Miller & Lauren Witherow, Nick Pincott and Getty Images.